

A scenic view of a vineyard in autumn. The foreground shows rows of grapevines with leaves in shades of yellow, orange, and red. In the middle ground, a large, dark green tree stands prominently. The background features a vast valley with a city and a large body of water, all under a clear blue sky with light clouds. The overall atmosphere is peaceful and picturesque.

# RIDGE VINEYARDS

*Exceptional single-vineyard wines since 1962.*

# Historical *timeline*

David Gates, Eric Baugher, Paul Draper, John Olney



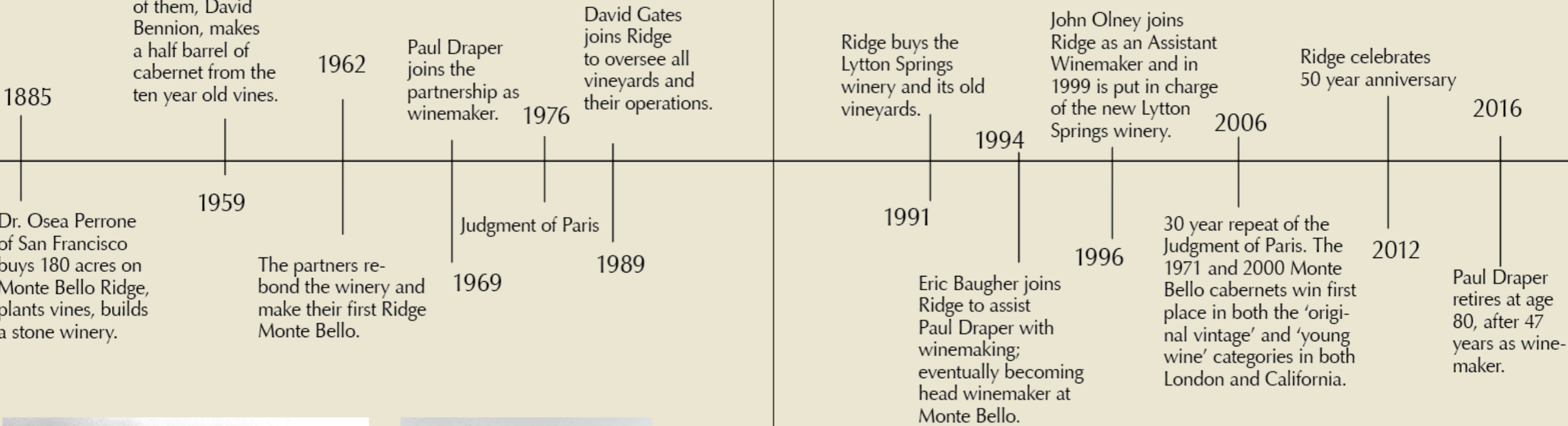
Three scientists from Stanford University's Research Institute (SRI) and their families form a partnership and buy Dr. Short's property. One of them, David Bennion, makes a half barrel of cabernet from the ten year old vines.



Paul Draper



New Lytton Springs Winery



The original crusher de-stemmer driven by a



The Founding Partners



Judgment of Paris

# With a Doctor *it begins*

**1885** Dr. Osea Perrone from San Francisco buys 180 acres on Monte Bello Ridge.

**1886** He plants vineyards and begins construction on the stone and redwood Monte Bello Winery.

**1892** Construction completed on the Montebello Winery and the first wine under the Monte Bello label is produced.

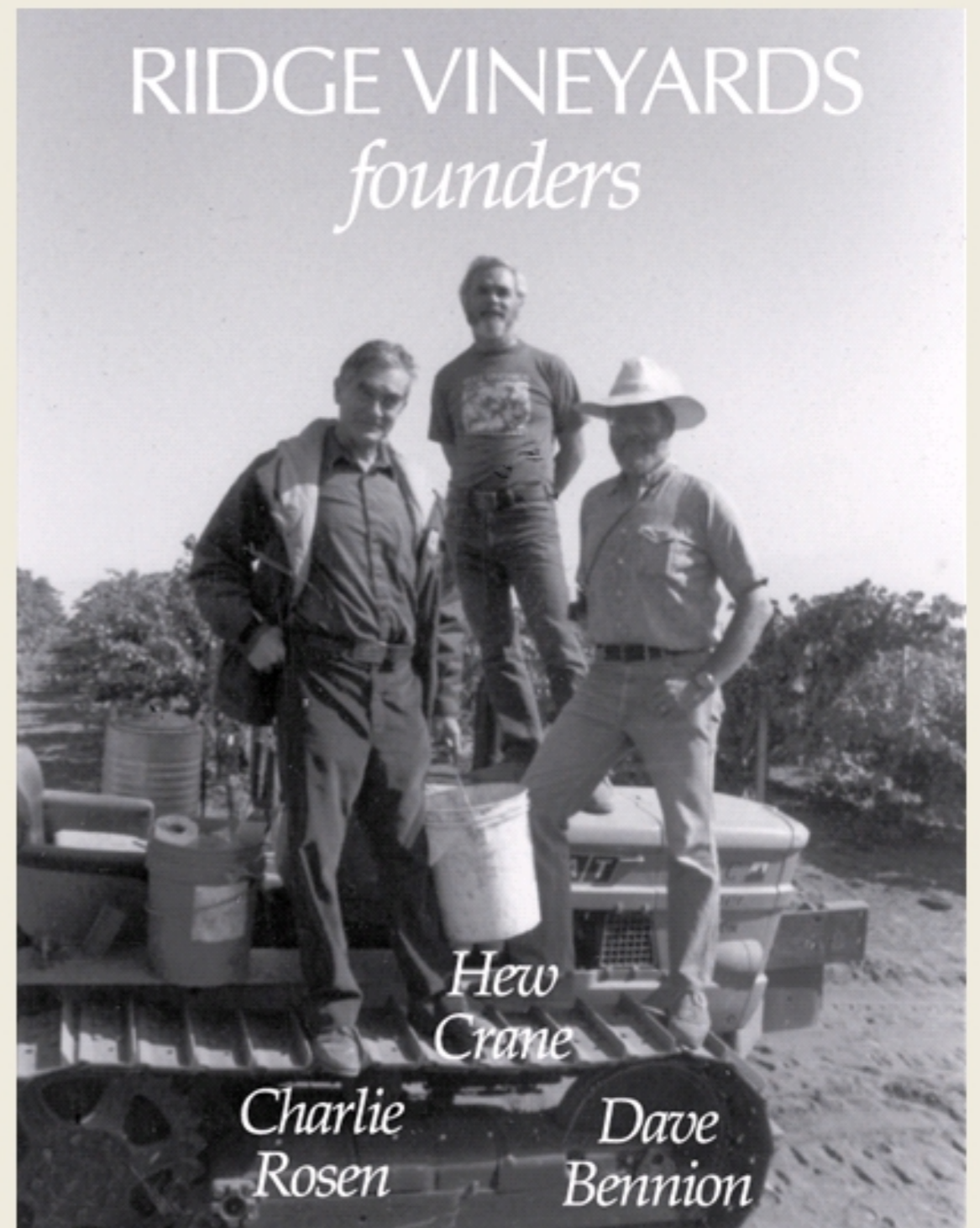


# With Scientists *it continues*

**1959** Three scientists from Stanford University's Research Institute (SRI) purchase the property and make a small amount of wine from the ten year old Cabernet vines in the small winery on the property.

**1962** The new owners form a partnership that becomes Ridge Vineyards. They re-bond the winery.

**1969** Paul Draper joins Ridge Vineyards as winemaker.



# With Commitment *it succeeds*

**1976** Judgment of Paris, Ridge places fifth.

**2006** The 1971 and 2000 Monte Bello cabernets win first place in both the original vintage wine and new vintage wine categories at the “Judgment of Paris 30th Anniversary Wine Tasting” which is held simultaneously in London and California.

**2012** Ridge celebrates it's 50 year anniversary



# Organic & Sustainable *in the vineyard*

The majority of our vineyards are certified organic, fully certified by 2013.

**Compost:** We compost all of our grape stems and pomace

**Cover Crops:** Soil-building legumes and grass mixes that add nitrogen and organic matter; insectary plantings; erosion control

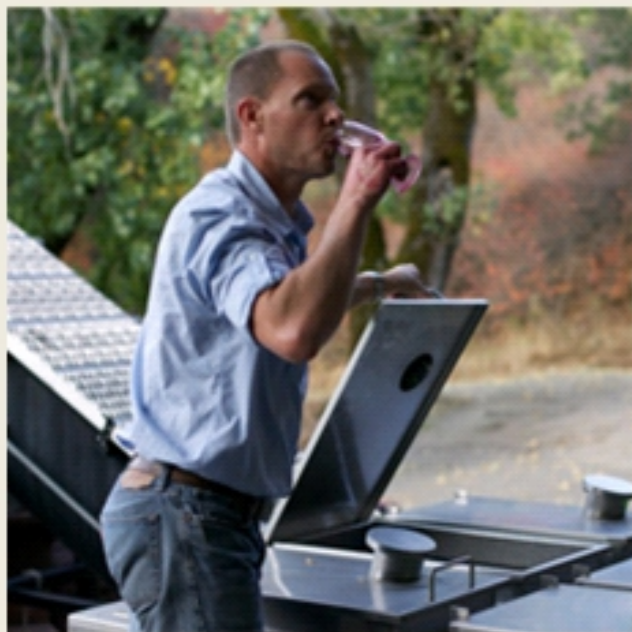
**Insects:** Instead of spray to control vine-damaging insects we use beneficial insects.



# Winemaking *pre-industrial*

Pre-industrial winemaking begins with respect for the natural process that transforms fresh grapes into wine, and the 19th Century model of minimum intervention.

When you have great vineyards that produce high quality grapes of distinctive individual character, this is not only an environmentally and socially responsible approach, it's also the best way to consistently make fine wine.



# Location

## *Our Wineries*

Monte Bello is located in the Santa Cruz Mountains in Cupertino.

Lytton Springs is located in Sonoma County in Healdsburg.



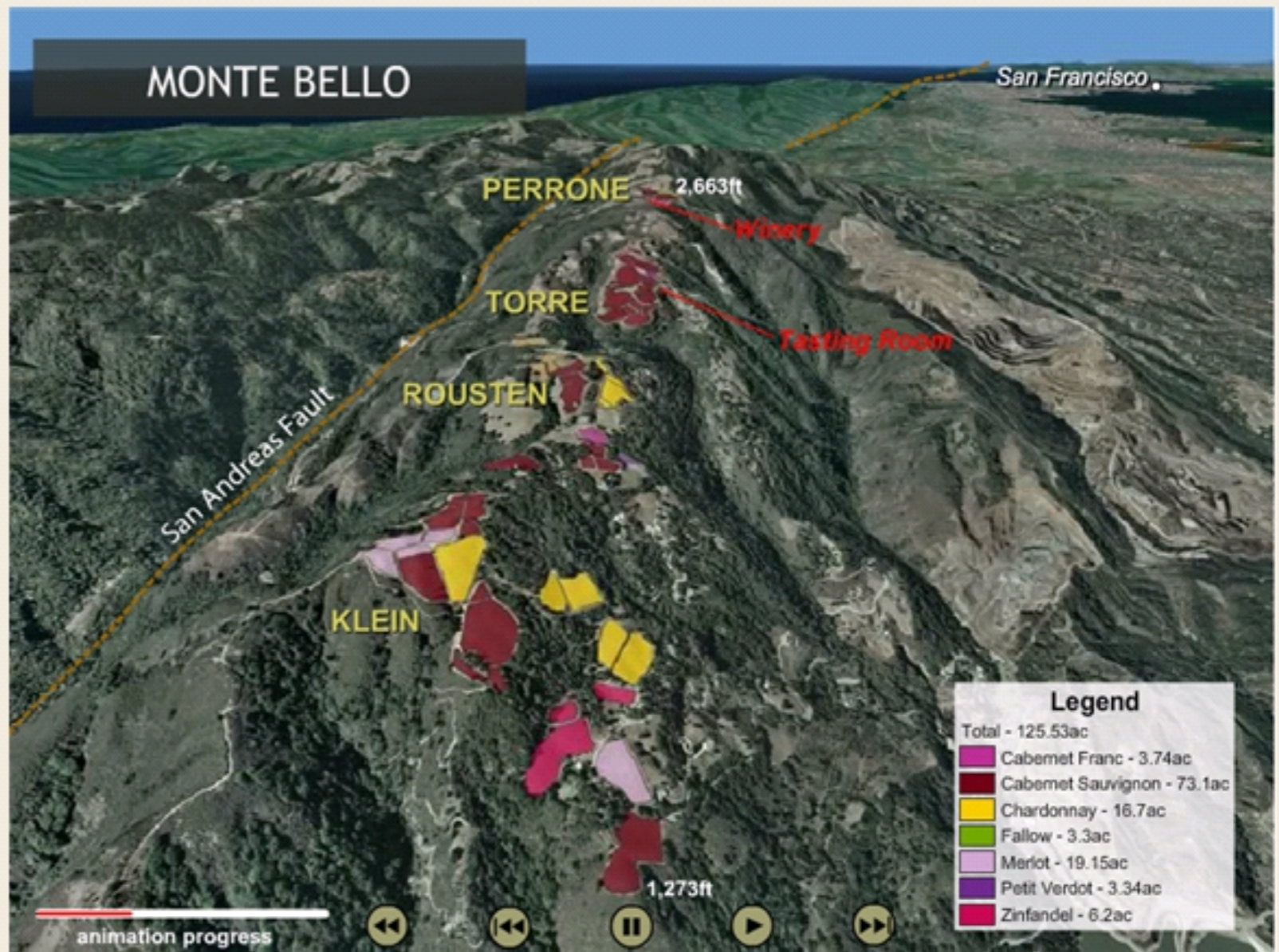


# Monte Bello

## *Santa Cruz Mountains*

Situated a mere 15 miles from the Pacific Ocean, sits high atop the Santa Cruz Mountains AVA, California's coolest cabernet producing area.

It is underlain by decomposing limestone, making the soil composition at Monte Bello a unique and important contributor to the wine's distinctive character.

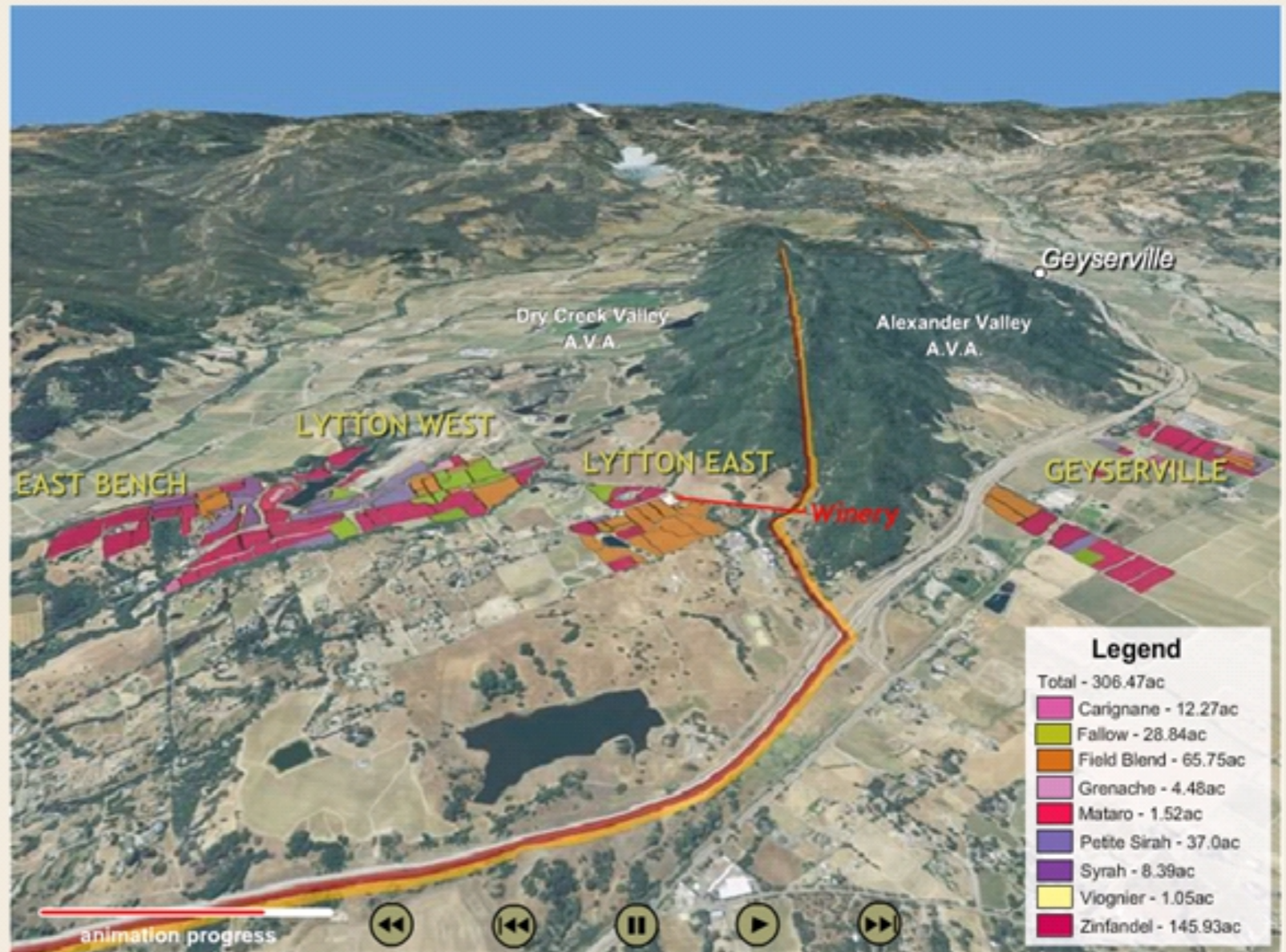


# Lytton Springs

## *Sonoma County*

Lytton Springs is home to 100 plus-year-old zinfandel vines interplanted with petite sirah, carignane, a small amount of mataro (mourvèdre), and grenache.

For more than three decades the field blend from this site has produced the quintessential example of Dry Creek Valley zinfandel.



# Spring Releases *from 2017*



# Fall Releases

*from 2016*



# Our Team

## *winemaking*

David Gates, our  
vineyard guru

Eric Baugher, the guy  
making wine at  
Monte Bello

John Olney, he  
makes our wine at  
Lytton Springs

